



Hi-Tech Blowers, Inc. CROSSFLOW (Tangential) Blower Wheels.

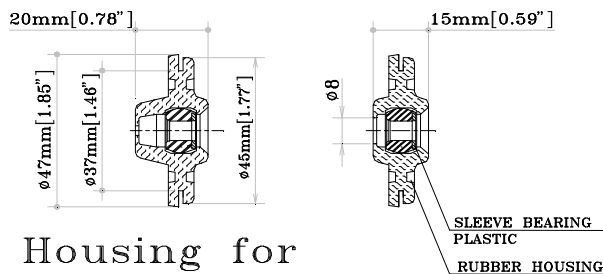
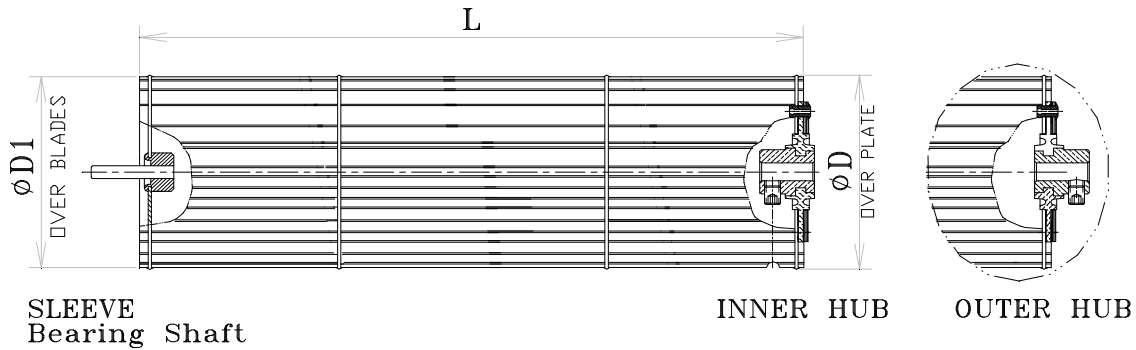
Materials: Aluminum ONLY.

Standard hub bore sizes: 1/4", 5/16", 3/8", 1/2", 5/8", 3/4", others per request.

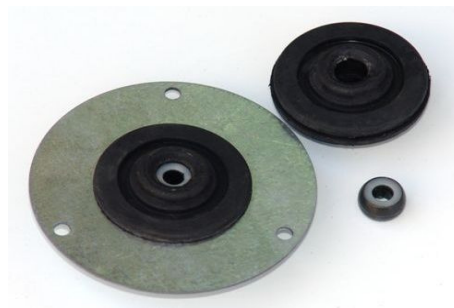
One set screw - standard. More screws, key-way, pulling groove - special order.

Small Crossflow Wheels - 60 & 65mm diameter:

	Part No.	D Diameter mm	Diameter Inches	D1 Diameter mm	Diameter Inches	Length L Inches	No. Of Blades
1	CF 60-R9-24-L	62	2.44	60	2.36	4.00" To 22"	24
2	CF 65-R9-24-L	67	2.64	65	2.56	4.00" To 22"	24
3	CF 65M-R9-22-L	66	2.60	65	2.56	4.00" To 22"	22



Housing for
 Sleeve Bearing





Hi-Tech Blowers, Inc. CROSSFLOW (Tangential) Blower Wheels.

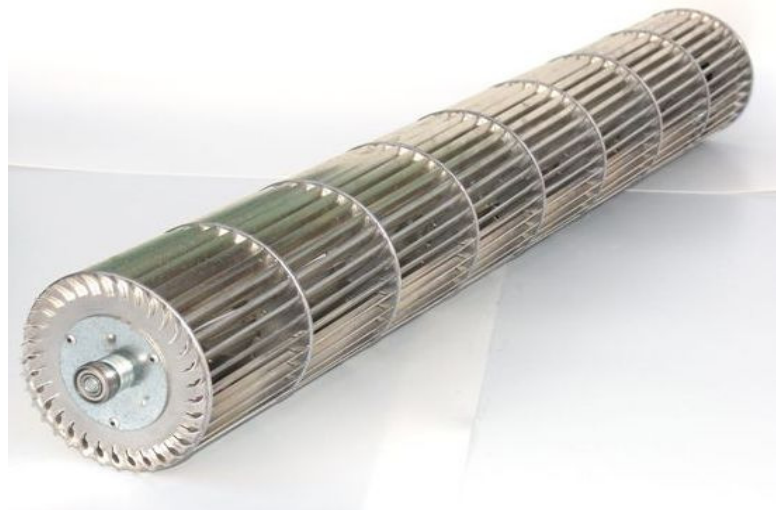
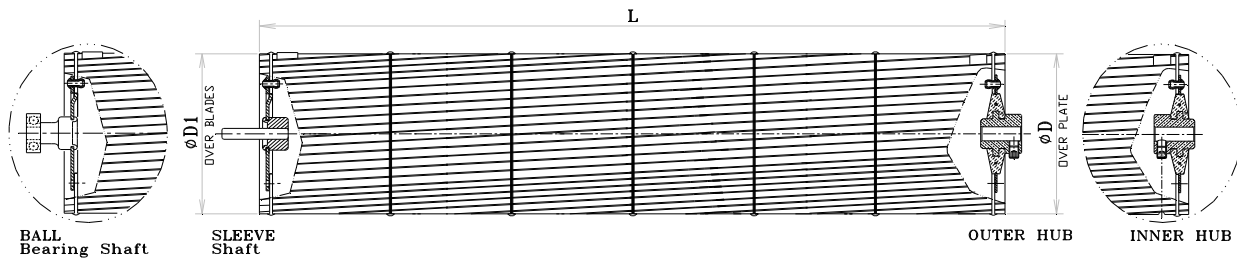
Materials: Aluminum ONLY.

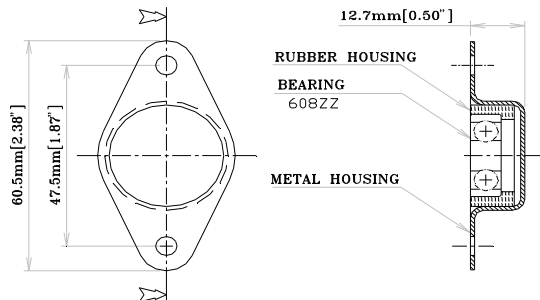
Standard hub bore sizes: 1/4", 5/16", 3/8", 1/2", 5/8", 3/4", others per request.

One set screw - standard. More screws, key-way, pulling groove - special order.

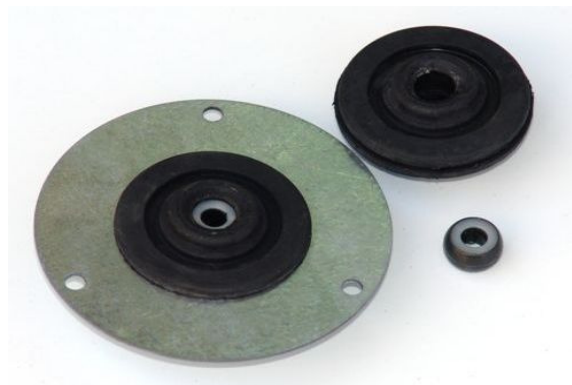
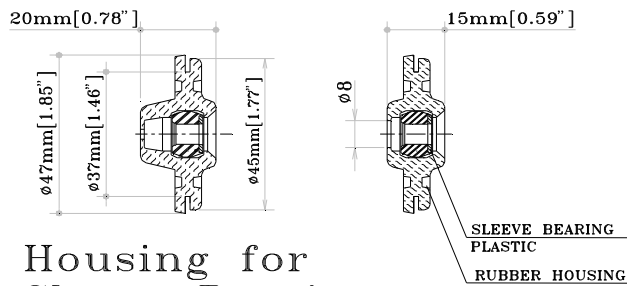
Large Crossflow Wheels - 81 to 200mm diameter:

	Part No.	D Diameter mm	Diameter Inches	D1 Diameter mm	Diameter Inches	Length L Inches	No. Of Blades
1	CF 81-R10-36-L	82.5	3.25	81	3.19	7.87" To 23.60"	36
2	CF 90-R10-30-L	91.5	3.60	90	3.54	7.87" To 36.40"	30
3	CF 97-R10-30-L	98.5	3.88	97	3.82	7.87" To 35.40"	30
4	CF100-K13-33-L	102.5	4.04	100	3.94	11.80" To 39.37"	33
5	CF100-K11-36-L	102.5	4.04	100	3.94	11.80" To 39.37"	36
6	CF102-R11-36-L	102.5	4.04	100	3.94	11.80" To 39.37"	36
7	CF102-R13-33-L	103.5	4.07	102	4.02	11.80" To 44.88"	33
8	CF106-K11-36-L	107.5	4.23	106	4.17	11.80" To 39.37"	36
9	CF110-K13-33-L	111.5	4.39	110	4.33	11.80" To 39.37"	33
10	CF115-R13-30-L	116.5	4.59	115	4.53	11.80" To 39.37"	30
11	CF120-R13-36-L	121.5	4.78	120	4.72	11.80" To 42.70"	36
12	CF120-K13-30-L	121.5	4.78	120	4.72	11.80" To 42.70"	30
13	CF127-R13-36-L	128.5	5.06	127	5.00	11.80" To 39.37"	36
14	CF133-K13-42-L	134	5.28	133	5.24	11.80" To 39.37"	42
15	CF140-K13-42-L	152	5.98	150	5.91	11.80" To 35.40"	42
16	CF140-K13-44-L	152	5.98	150	5.91	11.80" To 35.40"	44
17	CF150-K13-44-L	152	5.98	150	5.91	11.80" To 35.40"	44
18	CF200-K13-54-L	203	7.99	200	7.87	11.80" To 31.50"	54





Housing for
Ball Bearing



Housing for
Sleeve Bearing